



# PENNAR INDUSTRIES

## OUR HISTORY

Since its inception in the year 1988 as a Cold Rolling Steel company, we have diversified our expertise over the years to transform ourselves into a precision engineering conglomerate spanning Engineering Services, Construction, Engineering Design, Water & Wastewater Treatment Solutions, Solar and Aerospace.

Our growth sprint over the years testifies and reaffirms our value for excellence and sets benchmarks in Precision Engineering.

## CHALLENGES OVERCOME

The precision engineering industry plays the important role of underpinning many other industries. Pennar Industries caters to the multifarious needs of the world's leading companies to solve unique technical challenges. In the current dynamic trend of shrinking product life cycles and increasing product mix and complexity, Pennar Industries has remained agile, adaptive and innovative.

Progressively, the company has levelled up to the production of higher value-added components; entailing investments in higher capital equipment, upgrading of the skill level of the workforce and the development of the necessary technical competencies.

## Diversified Engineering Company With End-To-End Capabilities

Wide Spectrum of Engineered Products & Customised Turnkey Engineering Solutions Across Diverse Industries

**Strong Pedigree & Engineering Excellence**

**35+**

**Years of Experience**

**1,500+**

**Engineered Products**

**1,000+**

**Customers Across Industries**

**8**

**Manufacturing Plants**

**2,500+**

**Employee Base**

# Diversified Engineering Company With End-To-End Capabilities

Wide Spectrum of Engineered Products & Customised Turnkey Engineering Solutions Across Diverse Industries

**Exposure to High Growth Sectors**



**Aerospace**



**Automobiles**



**Construction Infrastructure**



**General Engineering**



**White Goods**

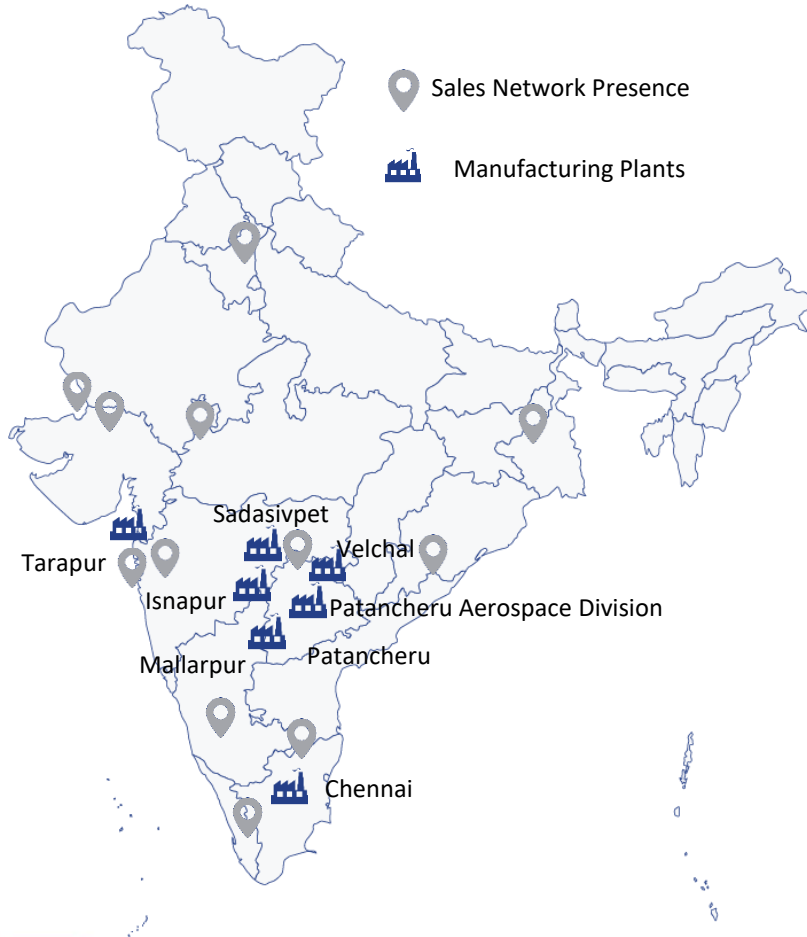


**Railways**



**Solar**

# Robust Manufacturing Facilities & Pan India Sales Network



Location	Products
Patancheru, Telangana	Aerospace Components & Sub Assemblies, Press Components, Profiles, ESP / Building Products, Sheet Piles / Solar, Railway Components, CRSS, Fabrication
Chennai, Tamil Nadu	Coaches, Auto Profiles, Components / Hydraulics, Building Products
Isnapur, Telangana	CRSS, ERW / CDW Tubes, Profiles, Solar
Velchal, Telangana	Strip Galvanizing, Hot Dip Galvanizing
Tarapur, Maharashtra	Solar, Building Products, Auto Profiles, ESP
Sadashivpet, Telangana	Pre-Engineered Building Systems
Mallapur, Hyderabad	Fuel Additives, Water Treatment Chemicals & Solutions

# PROMOTERS



**Mr. Nrupender Rao** is the founder and Chairman of Pennar Industries Limited, Hyderabad. He has an illustrious career spanning over four decades in various organizations such as **National Cash Register (USA), Union Carbide India, Nagarjuna Steels Limited & Pennar Group.**

Some of the prestigious awards include **Dr. Nayudamma Gold Medal** for his contribution to the Industrial Development in the state of Andhra Pradesh, "**Entrepreneur of the year**" award by the Hyderabad Management Association, "**Outstanding Entrepreneur Award**" by the Council of State Industrial Development and Investment Corporations of India.

Mr Rao was the National President of the Indo American Chamber of Commerce and President of the Hyderabad Management Association. As a part of his services to the society, he is the Managing Trustee of Sri. Ramakrishna Vivekananda Service Foundation and Sri J.V. Narsing Rao



**Mr. Aditya Narsing Rao** is the vice chairman of Pennar Industries Limited (PIL), Pennar Enviro Limited (PEL) and Pennar Engineered Building Systems Limited (PEBS). He is also the Managing Director of our Promoter, Pennar Industries Limited.

He holds a bachelor's degree in geophysics and master's degree in engineering management from Cornell University, New York, USA.

He has worked on new product development and the development of new revenue verticals including the solar power and environment treatment businesses across the group companies.

Prior to joining PIL he was associated with Karvy Stock Broking Limited in the corporate planning division. He has an experience of 12 years in corporate strategy and corporate planning.



# Pennar Aero

COMPONENTS AND SUB-ASSEMBLIES



# CAPITAL OUTLAY

## PHASE 1 (Current capability)



Make	Doosan Machine Tools
Model	VC 630 / 5AX
Axis	5 Axis
Controller	Siemens S840D
Table size	X650, Y765, Z520
Max Spindle Speed	12000
Positioning Accuracy	0.005mm
Linear scales	Available

# CAPITAL OUTLAY

## PHASE 1 (Current capability)



Make	Doosan Machine Tools
Model	DNM 4500
Axis	3+1
Controller	Siemens S828D
Table size	X800, Y450, Z510
Max Spindle Speed	12000
Positioning Accuracy	0.005mm
Linear scales	Available



# CAPITAL OUTLAY

## PHASE 1 (Current capability)



Make & Model	Jyoti VMC 1260 DM
Controller	SINUMERIK 828D
Table size	1260 x 700 x 600 mm
Max Wt. carrying CPTY	1200 kg
Max Spindle Speed	10000 rpm
Spindle type	BT - 40 Through coolant
ATC	20 Tools
Positioning Accuracy	0.005 mm
4th Axis	NIKKEN (Dia 210)

# CAPITAL OUTLAY

## PHASE 1 (Current capability)



Make	Doosan Machine Tools
Model	LYNX 2100LYB
Axis	3+Y Axis
Controller	Siemens S828D
Table size	Ø300X 510
Max Spindle Speed	4500
Positioning Accuracy	0.005mm
Linear scales	Available

# CAPITAL OUTLAY

## PHASE 1 (Current capability)



Make & Model	Jyoti DX 200 5A NVU
Controller	SINUMERIK 828D
Turning Length	500 mm
Turning Dia	350 mm
Max Spindle Speed	4000 rpm
Turret	8 station Bi-directional servo
Positioning Accuracy	0.005 mm

## Milling – 5 axis

# CAPITAL OUTLAY

## PHASE 1 (Current capability)



<b>Make</b>	Yong Ju Precision Technology
<b>Model</b>	5 AXIS MACHINE MODEL SD3690
<b>Axis</b>	5 Axis
<b>Controller</b>	Fanuc Oi-MF
<b>Travel</b>	X-Axis 9000mm
	Y-Axis 3600mm
	Z-Axis 1400mm
<b>Table Capacity</b>	3000 KG
<b>Max Spindel Speed</b>	10000 Rpm
<b>Position Accuracy</b>	15um Full length

# CAPITAL OUTLAY

## PHASE 1 (Current capability)



Make	Electronica Hitech
Model	WEDM Tool master 5S
Axis	3+2
Travel	X500, Y300, Z300
WDR	Ø0.15 to Ø0.3
Max Spindle Speed	0.6µ Ra
Positioning Accuracy	200mm <sup>2</sup> /min

# CAPITAL OUTLAY

## PHASE 1 (Current capability)



Make	Electronica Hitech
Model	ELTECH D550
Axis	3
Travel	X550, Y450, Z250
Max Spindle Speed	0.6 $\mu$ Ra

# CAPITAL OUTLAY

## PHASE 1 (Current capability)



Make & Model	Ziess Contura G2
CAD software	Calypso
Table size	1000 x 1200 x 600 mm
Max Wt. carrying CPTY	1150 kg
ATC	4 Tools
Positioning Accuracy	1.9 + L/300

# MACHINERY

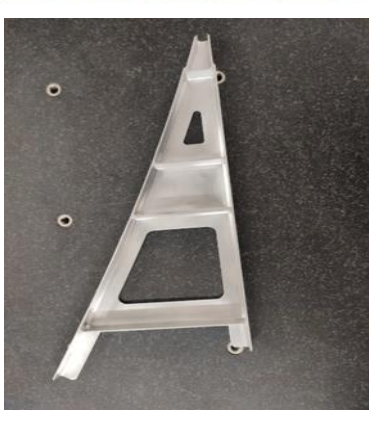
## PHASE 2 (Future expansion)

Phase 2			
Sno	Description	Qty	UOM
1	3 A Router	1	Nos
2	Hydraulic Press	1	Nos
3	Press Break	1	Nos
4	3 A VMC upto 1 mt	3	Nos
5	3 A VMC upto 2 mt	2	Nos
6	4 A VMC upto 1mt	3	Nos
7	4 A VMC upto 2mt	2	Nos
8	5 A VMC upto 1mt	3	Nos
9	5 A VMC upto 1mt (DMG)	2	Nos
10	3 A VMC upto 2mt	1	Nos
11	3 A VMC upto 3mt	1	Nos
12	3A turn mill	3	Nos
13	CMM upto 3 mtr	1	Nos

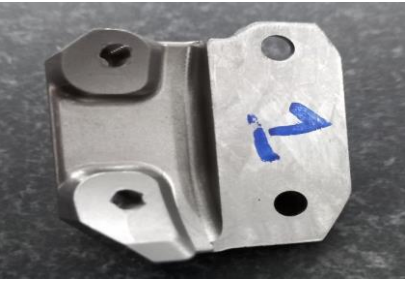
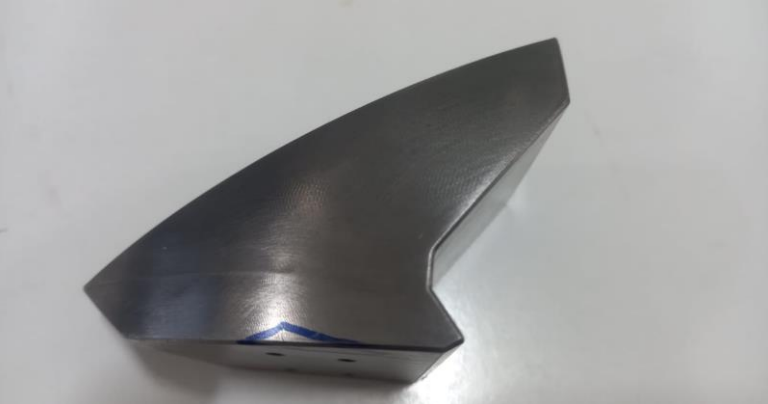
- Keeping in view of Pennar's current strengths, would like to invest in sheetmetal activities as well in coming years.
- In addition to the current assets for Aero, above will be deployed for capacity scale up and also for Sub-Assemblies fabrication as a part of new capability.
- This set of investments are planned to be deployed in the Fy2022



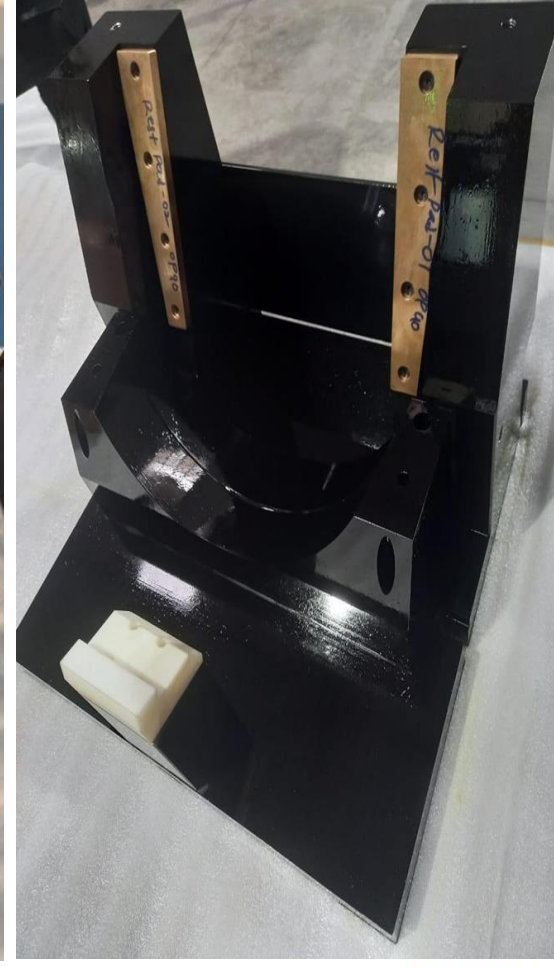
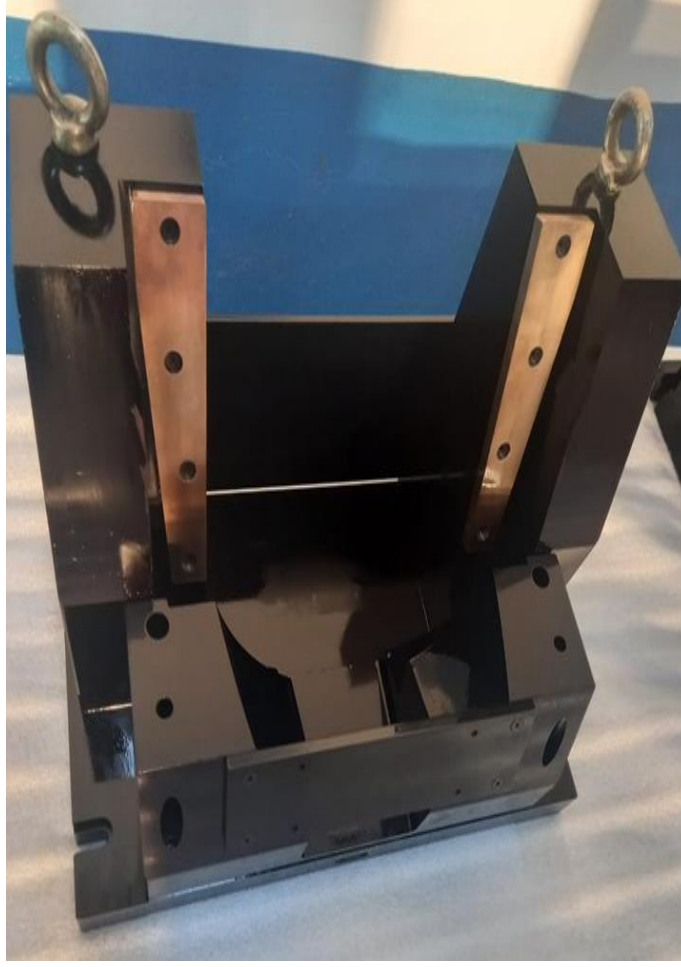
# Comprehensive Products of Precision Manufacturing



# Exotic Material(Hard Metals) & Components



# Aircraft Engine Fixtures Assemblies



# Long bed Machined Components:



© Samsung Quad Camera  
Shot with my Galaxy M31



# Our Clientele

## Aerospace



CYIENT



A background image of a modern industrial factory. In the foreground, a yellow robotic arm is visible, with the text 'PENNAR INDUSTRIES' printed on its side. The factory interior features a complex network of metal beams, pipes, and overhead lighting. In the background, other robotic arms and machinery are visible, along with a glass safety enclosure on the right side of the frame.

# Thanking You

---

## **PENNAR INDUSTRIES LIMITED**

3rd Floor, DHFLVC Silicon Towers, Kondapur, Hyderabad, Telangana, India.

T: +91 40 4006 1621/22/23/24 | F: +91 40 4006 1618,

E: [contact@pennarindia.com](mailto:contact@pennarindia.com)

